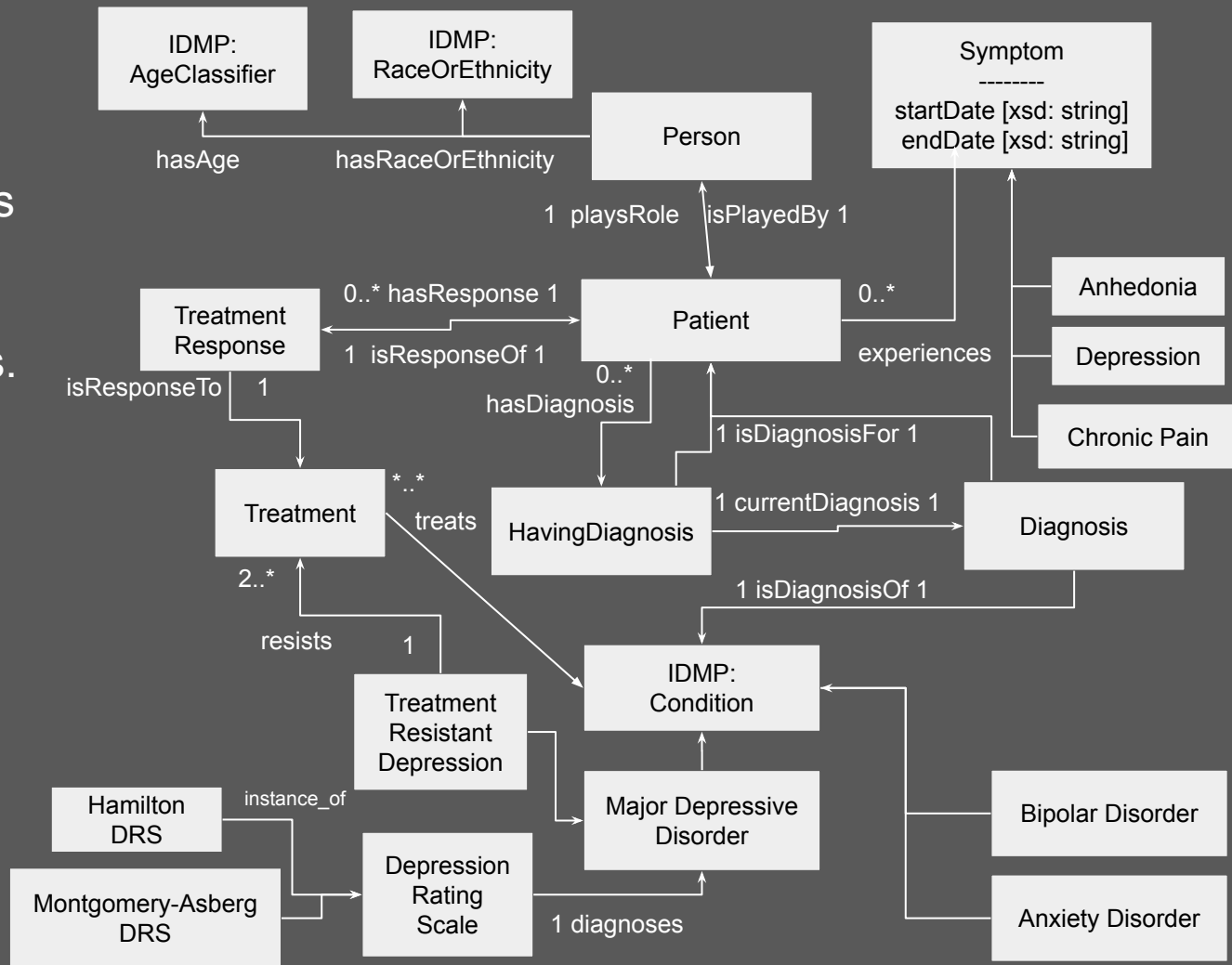


Figure 1.

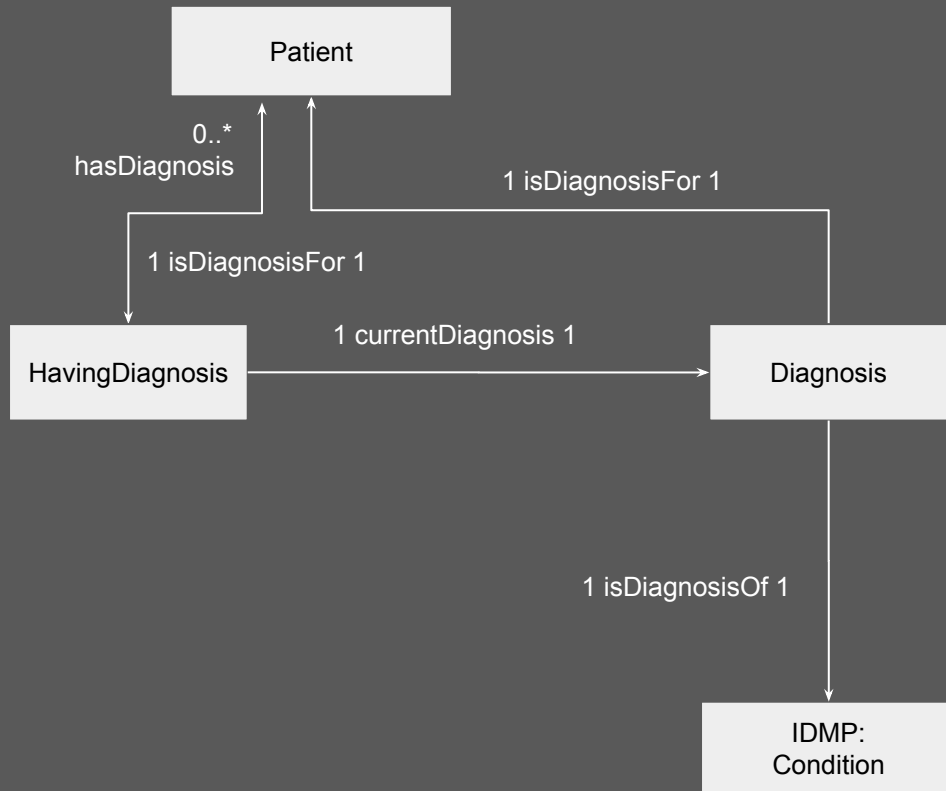
This diagram showcases the relationships of patients to their treatments and illnesses.



Unlabelled relationships are “isSubclassOf” relationships

Figure 1a.

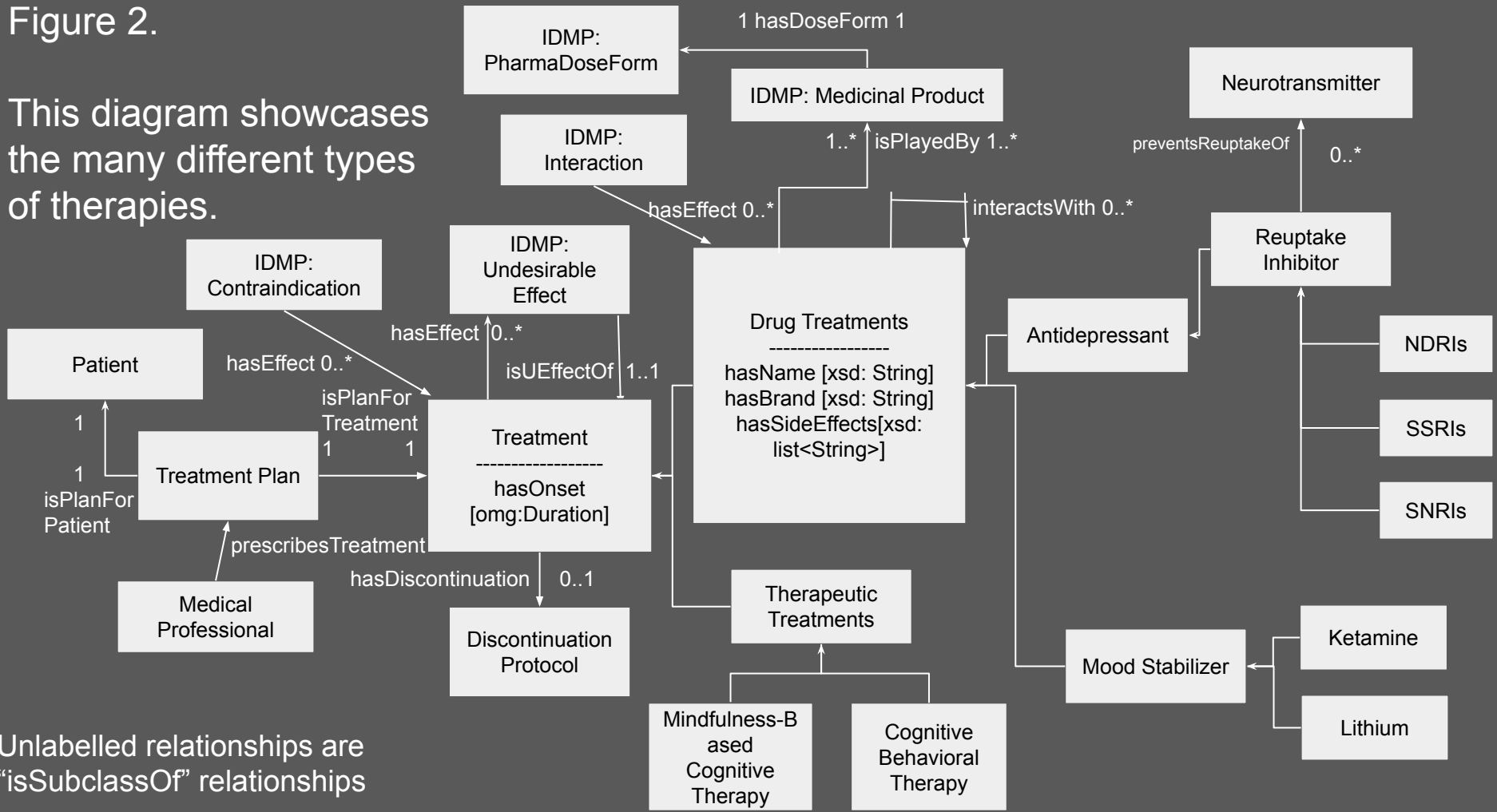
A portion of Figure 1 containing newly reorganized concepts, with the rest of Figure 1 cleared away for readability



Unlabelled relationships are "isSubclassOf" relationships

Figure 2.

This diagram showcases the many different types of therapies.



Unlabelled relationships are "isSubclassOf" relationships

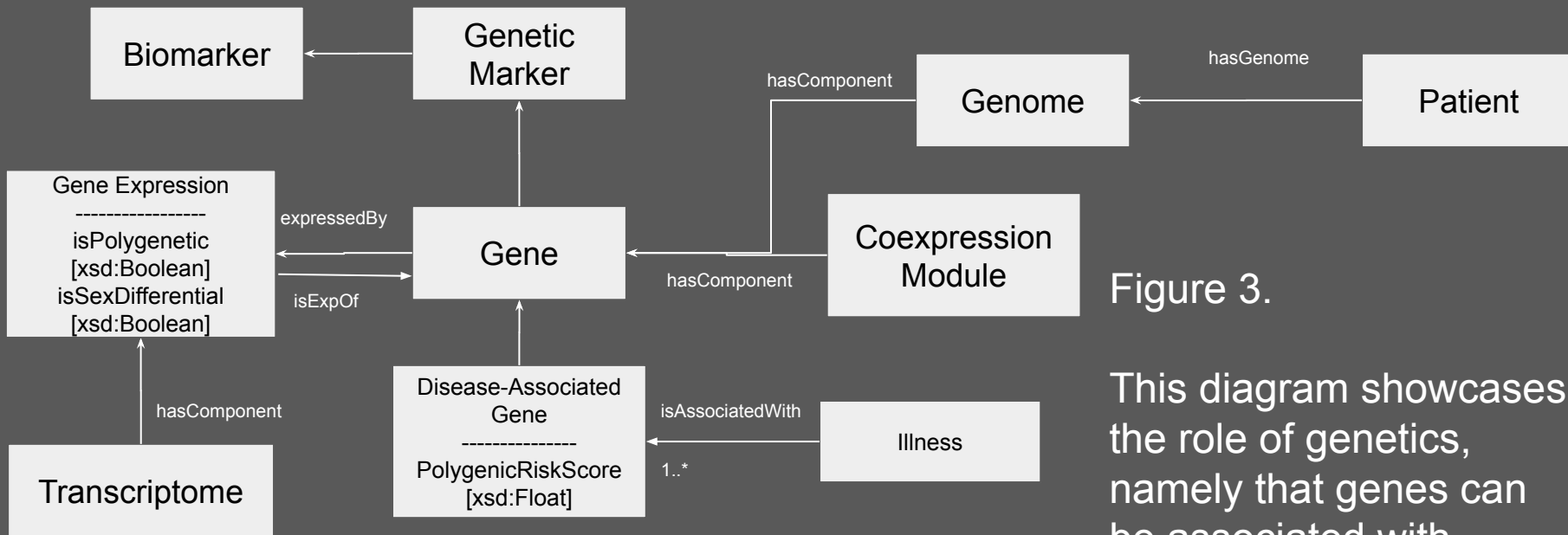


Figure 3.

This diagram showcases the role of genetics, namely that genes can be associated with illnesses.

Unlabelled relationships are “isSubclassOf” relationships